

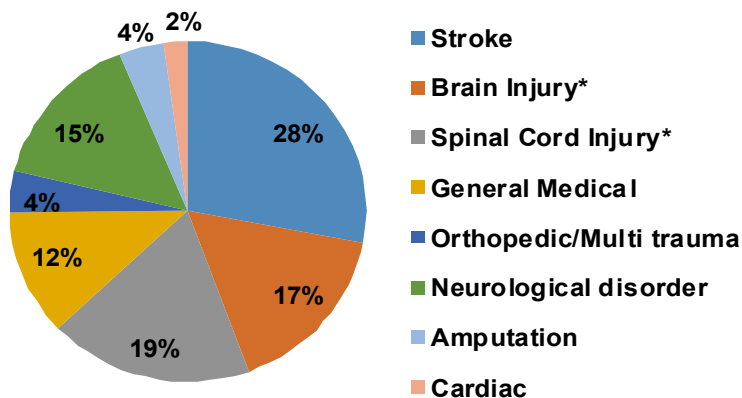
Comprehensive Acute Rehabilitation Unit

Clinical Outcomes and Patient Satisfaction

Patient Characteristics 2016

This chart describes the diagnosis of patient's served by the Comprehensive Acute Rehabilitation Unit during 2016. Four hundred and twenty five (425) individuals received inpatient rehabilitation on Jefferson's Rehabilitation Unit.

Diagnoses of Patients Served on the Comprehensive Acute Rehabilitation Unit 2016



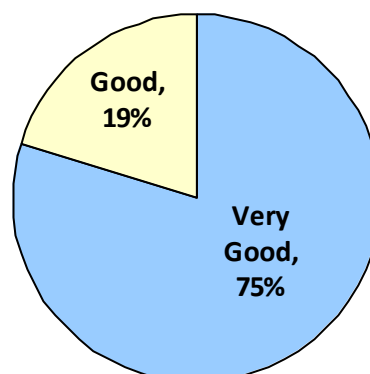
*Includes traumatic and non-traumatic



Patient Satisfaction

**Patient Experience Results
"Likelihood to Recommend Facility"
January - December 2016**

In the period from January through December 2016, ninety four percent (94%) of the patients who completed our Patient Satisfaction Survey after discharge were likely to recommend the Comprehensive Acute Rehabilitation Unit to friends or family.



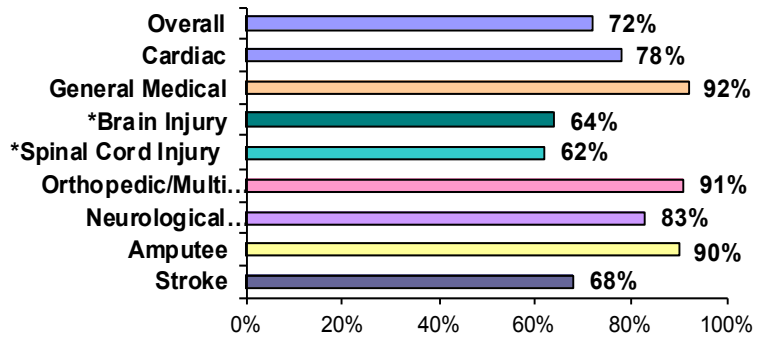
Discharge Information

A major goal of our rehab program is to enable people to return home following rehabilitation.

Many of our patients with traumatic spinal cord injury are transferred to Magee Rehabilitation Hospital or other rehabilitation facilities to continue their inpatient programs.

Rehabilitation focuses on maximizing independence in mobility and tasks of daily living. Family training is also an important part of rehabilitation.

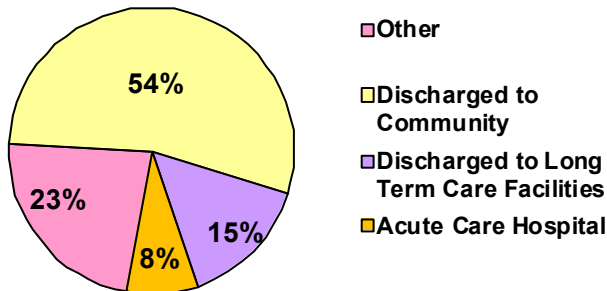
Percent of Patients Discharged to Home in 2016



* Includes traumatic and non-traumatic

Spinal Cord Injury Program Discharge Information

Discharge Location of Patients With Traumatic Spinal Cord Injury - 2016



Our rehabilitation program for patients with traumatic spinal cord injury is part of the Regional Spinal Cord Injury Center of the Delaware Valley.

The Center provides a coordinated system of care for individuals disabled by spinal cord injury and includes both Thomas Jefferson University Hospital's Comprehensive Acute Rehabilitation Unit and Magee Rehabilitation Hospital.

The graph on the left shows the discharge destination for all traumatic spinal cord injury patients who received rehabilitation on the Comprehensive Acute Rehab Unit.

Spinal Cord Injury Program Patient Characteristics

A total of one hundred and forty one (141) patients with traumatic spinal cord injury were treated by the Spinal Cord Injury Program in 2016. Thirty six (36) of those patients received all or part of their rehabilitation within the Thomas Jefferson University Hospital Health System.

This chart describes the types of patients with traumatic spinal cord injury served by the Comprehensive Acute Rehabilitation Unit during 2016.

Types of Traumatic Spinal Cord Injury Treated at Jefferson's Comprehensive Acute Rehabilitation Unit in 2016

